

Sustainability

**LAMMHULTS**



<b>Yes, design can change the world</b>	<b>5</b>
<b>High quality + design = long-term value</b>	<b>6</b>
<b>USE, REPAIR, RE:USE</b>	<b>7</b>
<b>Walk in circles</b>	<b>9</b>
<b>Sustainable design is collaborative</b>	<b>12</b>
<b>Walk the talk</b>	<b>13</b>
<b>The Global Goals for Sustainable Development</b>	<b>14</b>
<b>Our sustainability goals 2030</b>	<b>16</b>
<b>Matter matters</b>	<b>17</b>
<b>Certifications</b>	<b>18</b>



Sustainability

**Yes, design can change the world**

**Our built and natural environments are the most precious things we have. It is where we work, play, get inspired, rest, fall in love, create, and share food and thoughts. We inherited them from the generations before us, and eventually our children will inherit them from us.**

**To us, furniture design is essentially about adding long-term value to the spaces where people's lives unfold – to make them more meaningful, precious, and sustainable. In the current time of environmental crisis, this is a more important assignment than ever.**

**— Åsa van Drumpt, Managing Director, Lammhults.**

## High quality + design = long-term value

**As a furniture maker, our main contribution to a sustainable society is to create value that lasts. This does not only mean that our products are durable, but also that they stay significant, and often become even more beautiful over the years. There is a word for such well-designed objects of high-quality: timeless. But that a work is timeless does not mean that it lacks visible connection to when it was created. On the contrary, most pieces that are called timeless function rather as the design icons of their times. What is amazing about them is that they articulate something time-specific that somehow stays significant. Like the S-70 collection from 1968, that was designed by Börge Lindau and Bo Lindekrantz. It is characteristic of its time. Yet, it is still relevant, more than 50 years later – a perfect example of long-lasting value. It is too soon to say if more recent works in our portfolio, such as the new Corso easy chair, designed by Peter Andersson, will become future classics, but that is what we aim at. Corso was nominated for the design award Born Classic 2021.**



## USE, REPAIR, RE:USE

**To prolong the life course of our furniture, we have always offered spare parts and restoration. The aim with our restoration service, that today is called RE:USE, is to make it easy for our clients to take care of and renew their furniture from Lammhults.**

**I'm proud that we offer people a sustainable alternative to buying new furniture. I think this part of our business will grow more and more the coming years.**

**— Patrik Svensson, Quality Manager, Lammhults.**



**When Lund University renovated the premises of its Centre for Languages and Literature, it chose to give new life to old furniture from Lammhults. Amongst the pieces selected for reuse were hundreds of "91" chairs, designed in 1979 by legendary design duo Börje Lindau and Bo Lindekrantz. These were chairs that had been heavily used by students for more than 20 years.**

The 91 is a chair that is extremely resistant to use over time – both physically and aesthetically. Of course, quality costs money and so does restoration, but it doesn't make sense to throw away products simply because you want something new. At the same time, investing in good materials and design isn't expensive, given how long furniture can last. For that matter, it can also be repaired. Thanks to Lammhults' restoration work, these chairs will be able to be used for another 20 years.

— Carolina Rijpma, Project Manager of Interior Design, Lund University.



## Walk in circles

**At Lammhults, we do not see the product as a linear story with a beginning and an end. Rather, it is a circular story.**

**The linear economy is simply outdated. The circular approach is vital in our efforts to reduce the environmental impact of our business.**

— Helena Kumlin, Environmental Manager, Lammhults.

**A piece of furniture from Lammhults has the potential to be used for a very long time if it is taken care of. If it is repaired when a part is broken and if it is renovated when it becomes a bit worn down, then a new episode begins.**

**From our circular viewpoint, a chair is not just a chair. It is also a vehicle for resources. When the story of the chair finally ends, another story may begin, composed of the materials that the chair was made of.**



**Our vision is to become 100% circular. We are not there today, but we are on our way, and we make progress every year. Our new stool/barstool A22 is made entirely out of steel and with a design that doesn't require screws or bolts making it easy to recycle.**



Sustainability



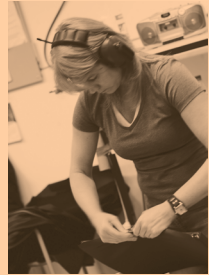
## **Sustainable design is collaborative**

**As a sustainable company, we have a long-term perspective also on our relations with other people. We simply depend on lasting relationships to be able to fulfil our mission as a furniture maker.**

**We favour local suppliers, who we can meet easily, and we collaborate with great designers who share our view on design. The creative input from our designers is essential to us in our efforts to reduce our environmental impact.**

**To develop the skills of an experienced craftsman takes time. We are proud to have several employees who have worked for over 40 years at Lammhults. To work at Lammhults is to be part of a culture of tolerance, equality, dialogue, well-being, and job satisfaction. At Lammhults, the gender balance is even.**

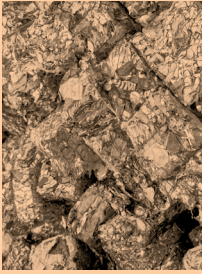
**We also need our clients to join us on our continuous work to become more sustainable. To make it easier for our clients to choose, we offer detailed information about the environmental footprint of every product. Our goal for 2030 is to offer certified Environmental Product Declarations for all product families.**



## Walk the talk

The big challenge is to turn all beautiful words into action. We work hard to radically reduce waste and pollutant emissions and to increase the amount of recycled materials, and our use of renewable natural materials.

— Tilda Lagerqvist, Environmental Manager, Lammhults.



**We use a lot of different materials: steel, textile, aluminium, plastics, and wood. What they have in common is that they all can be recycled. We strive to avoid using composite materials since they make recycling more difficult. One of our goals is to use only non-compound materials.**

## The Global Goals for Sustainable Development

**We stick to the UN definition of sustainability as “meeting the needs of the present without compromising the ability of future generations to meet their own needs”. Moreover, the concept includes environmental as well as social and economic dimensions. As a furniture maker, who has been in the business since 1945, we know that these dimensions are interdependent. Our aim is to add long term value to people’s lives and environments. Everyone who are affected by the way we run our business matter to us: clients, collaborators, employees, suppliers, our local community, and future generations.**

**We have decided to focus on the five goals where we can make the greatest difference:**

**3** GOOD HEALTH AND WELL-BEING



**5** GENDER EQUALITY



**8** DECENT WORK AND ECONOMIC GROWTH



**12** RESPONSIBLE CONSUMPTION AND PRODUCTION



**15** LIFE ON LAND



### 3. Good health and well-being

We provide all our employees with a safe and healthy workplace within a tolerant and inspiring corporate culture. To ensure that they feel comfortable and well, we conduct regular employee surveys. We work hard to minimise the use of harmful chemicals and ensure that protective equipment is always available.

### 5. Gender equality

Sixty per cent of our workforce at Lammhults are women and 40 per cent are men. This includes our management team. We actively work to prevent unfair treatment of our employees and have zero tolerance for discrimination and harassment in the workplace. In our company, a person's remit and performance determine salary — never gender or ethnicity.

### 8. Decent work and economic growth

We take the work environment very seriously. This is why we are ISO45001 certified. No matter what tasks your job involves, your work should be safe and enjoyable. To avoid the hazards associated with monotonous production work — and to make work more pleasant and challenging — our employees rotate between departments. It is also important to us that our subcontractors take the work environment as seriously as we do, which is why we always conduct thorough supplier assessments. In addition to the work environment, these assessments focus on product quality and environmental sustainability.

### 12. Responsible consumption and production

Our goal for 2030 is to make all our products exclusively of recycled materials. We are therefore working hard at steadily increasing their recycled material content. Circularity is a key concept for us. Lammhults furniture is designed and manufactured to be used for a very long time. To facilitate recycling once a piece of furniture has reached the end of its life, the materials used to make it are easy to separate, which also makes it possible to carry out repairs. We also offer our customers Re:use, a service that simplifies the process of restoring furniture and replacing worn-out parts. To reduce our environmental impact, we prefer to partner with local suppliers that we know well. By 2030, each of our product families will have certified Environmental Product Declaration (EPD) detailing their carbon footprint. Our aim with this is to promote and facilitate sustainable consumption.

### 15. Life on land

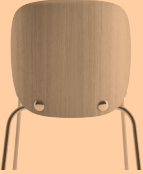
To conserve biodiversity and avoid harming ecosystems, we take great care in selecting the materials we use to make our products. For example, we only use timber sourced from sustainable forestry. We are also constantly looking at ways to increase the share of natural materials in our products. There are a lot of exciting things happening in the area of materials, nowadays. For example, we hope to start working with innovative materials like fossil-free cold foam soon and are following research into fossil-free steel with great interest. Emissions are another important thing we are focused on. We are ISO 14001 and ISO 9001 certified, which is helping us to further minimize our emissions.

## **Our sustainability goals 2030**

- Certified Environmental Product Declarations for all our product families.
- The components of all our products are separable, to facilitate repair and recycling.
- Recycling or reuse of 100% of our textile, plastic, steel, wood, and aluminium waste.
- All our products are recyclable or are made by recyclable material.
- 100% of our products are certified by either the Nordic Swan or Möbelfakta.
- 0% composite materials.
- All our foam based padding material is fossil free.



## Matter matters



### Wood:

Lammhult is a small town surrounded by lakes and beautiful forests. We love our forests. That is why we only use wood from sustainable forestry that contributes to biological diversity.



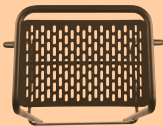
### Aluminium:

Many of our suppliers are local. One of the suppliers that manufacture aluminium parts for our furniture is located just an hour away from us. 97% of the aluminium they use is recycled. During the latest years we have increased the amount of products with aluminium components in our range.



### Plastic:

Only 9% of the plastic waste that has been produced historically has been recycled. A disastrous fact for our oceans. To fight plastic waste, we strive to increase the use of recycled plastic for our products. The plastic used for Grade Plus seat shells is 100% recycled.



### Steel:

We're continuously increasing the amount of recycled steel for our products. Today 30% of the steel in our steel tubes is recycled.



### Textiles:

We encourage our clients to choose high-quality textiles certified according to the E.U. ECO-Label, Greenguard Gold or ÖKO-TEX.

---

## Certifications

**We work actively with the Swedish furniture industry performance certification system, Möbelfakta, with an ever-increasing number of certified products. Today over 85% of our product families or versions of them are certified according to Möbelfakta. A piece of Lammhults furniture that lives up to the requirements of Möbelfakta has undergone extensive quality tests, is produced according to ethical guidelines, and has been approved according to environmental requirements. Möbelfakta is a guarantee of the highest quality.**



**We certify selected volume products according to the Nordic Swan Ecolabel, which is the toughest eco-labelling system in the industry. Our strategy of certifying primarily our volume products means that we reach the greatest positive effect. The criteria of the Nordic Swan Ecolabel are product-specific and are based on a life cycle assessment, addressing all stages from raw materials to production, use, disposal and recycling. Requirements are tightened continuously, and licences are time-bound. The label is one of the few type-1 ecolabel on the market, following the standard ISO 14024. Our top selling chair series Add, Archal, Campus and Spira together with table series Archal T, Attach, Funk and Quickly all have Nordic Swan Eco-labelled alternatives.**





**Lammhults is certified according to ISO 14001 since 1998 and ISO 9001 since 2012 and we continue to work with environmental issues to ensure the least possible environmental impact from all our processes. In 2012 Lammhults also received the ISO 45001 certificate ensuring an occupational health and safety management system.**

## **LAMMHULTS**

Lammhults Möbel AB

Box 26  
SE—363 03 Lammhult  
Sweden

+46 472 26 95 00  
[info@lammhults.se](mailto:info@lammhults.se)  
[www.lammhults.se](http://www.lammhults.se)